

CARTOON HOTEL SÜRDÜRÜLEBİLİRLİK RAPORU 2025



REPORT CONTENTS

- 1. CARTOON HOTEL Sustainability Report**
- 2. About the Report**
- 3. CARTOON HOTEL Sustainability Policy**
- 4. Environmental Management**
- 5. Water and Energy Management**
- 6. Electrical Energy Management**
- 7. Chemical Management**
- 8. Waste management**
- 9. Biodiversity conservation**
- 10. Carbon emissions**
- 11. Social Responsibility**
- 12. Cultural Heritage**
- 13. Recycling**
- 14. Our Employees**
- 15. Supporting Local Communities**
- 16. Child Protection**
- 17. Our Energy Statistics**

CARTOON HOTEL SUSTAINABILITY REPORT

Sustainability is about ensuring the continuity of production and diversity of everything we need to live in a way that allows future generations to benefit from it without disrupting the natural balance, thus ensuring the permanence of human life. It is possible to do it.

The concept of sustainable development is defined as "development that meets the needs of the present without compromising the ability of future generations to meet their own needs." We are aware of our responsibilities in sustainable tourism and development and are committed to implementing them.

One of the most fundamental and important goals of sustainable living is considered to be "Conserving and Ensuring the Sustainability of Resources".

Sustainable Tourism

The goals are to protect local resources, improve quality of life, meet the needs of tourist consumers and the local population with the future in mind, and develop tourism capacities that are compatible with the country's cultural integrity and environment.

We strive to leave a better world for future generations. Our corporate vision, mission, values, and policies guide us in fulfilling these responsibilities .

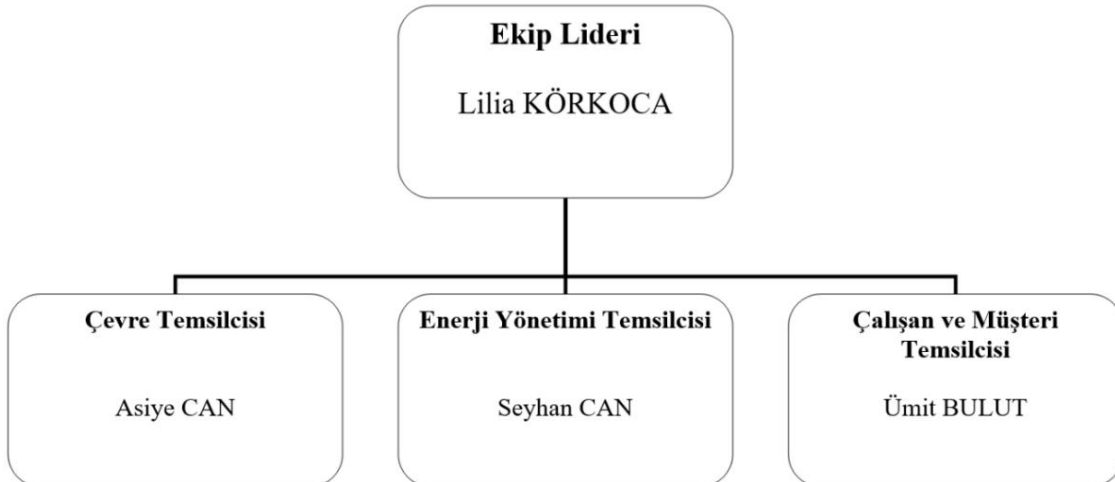
Our Vision

To be a company that grows and develops continuously based on quality, with environmentally conscious steps, maximizing the satisfaction of its customers, employees and shareholders, creating value for society and the environment, maintaining the highest quality standards, and achieving leadership and business excellence in its target markets worldwide.

Our Mission

Our hotel aims to be and remain a market leader by continuously improving its management system, suppliers, employee and product performance, in line with its values of quality, customer satisfaction, people-oriented approach, teamwork, solidarity, globalization, environmental awareness and ethical values, thereby ensuring unconditional customer satisfaction.

SÜRDÜRÜLEBİLİRLİK EKİBİ



ABOUT THE REPORT

For sustainable tourism, our facility's sustainability requires adapting its service processes, practices, and infrastructure accordingly. Through the technical measures implemented, we aim to achieve positive results in both economic and environmental terms, such as reducing energy and water consumption and shifting towards renewable energy sources, reducing waste and implementing recycling practices, minimizing chemical use, and applying eco-friendly solutions.

It is located in Taksim, the heart of Istanbul, right next to Beyoğlu, a district rich in cultural events, art galleries, concerts, opera and theaters, cinemas, entertainment venues, cafes and pubs...

Moreover, it is located only 20 km from Atatürk Airport, only 3 km from the Grand Bazaar, Hagia Sophia and Sultanahmet, 500 meters from the Lütfi Kırdar and Hilton Congress and Exhibition Center, and 500 meters from Beyoğlu and the metro.

Our hotel has a capacity of 125 rooms, including 117 standard rooms, 1 disabled-accessible room, 4 suites, and 3 family rooms.

ACCESSIBILITY

Our facilities include one accessible room with a dedicated accessible toilet, one accessible restroom on the basement floor, a wheelchair ramp at the building entrance, Braille information signs in elevators and at the entrance to accessible rooms, audible warnings inside elevators, wheelchair-accessible elevator doors, emergency buttons in the accessible room and toilet that connect to the reception, and one wheelchair.

CARTOON HOTEL SUSTAINABILITY POLICY

CARTOON HOTEL aims to maintain its reputation for excellent service quality and to best meet the needs of its customers.

It aims to meet these needs efficiently. All the work we have done over the years has brought us to where we are today.

It helped us gain experience that guided us in development. We aimed for a more efficient operation,

Therefore, in line with legal regulations, we have also participated in sustainability efforts and during our services.

We are trying to minimize the negative impacts that may arise. Therefore, as a responsible company, we are fulfilling our commitment.

To ensure this, by obtaining the Sustainable Tourism Certificate, we protect our natural resources and heritage (our character, to preserve our traditions and culture, to convey the importance of working in this direction to our guests, and

We believe it is important that our employees are trained so that they can perform their duties.

Our mission is to be a sustainable service provider in Bolu that fully meets the needs of our customers.

As an environmental, social, and cultural organization, we fulfill our commitment to protecting the environment, our resources, and our culture. economic, quality, human rights, children's rights, women's rights and gender equality, health, security, risk and crisis

To provide a tourism operation that prioritizes these issues.

Legal requirements

CARTOON HOTEL has adopted the principle of complying with legal requirements in all its product and service processes.

Employee Safety and Investing in People

Our personnel are our most valuable asset. We continuously improve all our processes and keep up with the latest technologies to minimize risks that could jeopardize the health and safety of our employees and business partners, and to prevent workplace accidents. The training of our employees, the protection of their human rights, and their equal access to rights regardless of religion, language, or race are our indispensable principles.

Guest Satisfaction – Guest Safety – Guest Focus

Our guests are our reason for existence. Following up on all guest complaints from all sources, resolving them, and informing our guests about the issues to turn these complaints into opportunities for ourselves are among our top priorities.

Respect for the Environment, Natural

Our main goals include preventing environmental pollution and protecting nature by using our resources in the most efficient way, reducing the amount of waste, and ensuring recycling or rendering it harmless.

Energy Saving

CARTOON HOTEL is committed to using our energy resources in the most efficient way and to continuously improving energy efficiency.

Food Safety – Hygiene

To offer high-quality products that comply with food safety principles, we are committed to implementing and continuously improving a food safety system throughout the food chain and prioritizing hygiene standards across our facility.

Our Investors and Business Partners

We strive to provide a peaceful and safe working environment for our employees and to offer better service than our competitors at the most competitive cost by thoroughly understanding the expectations and needs of our business partners who share the same goals.

Supporting the Local Economy and Sustainability

We are aware of our contribution to the local economy through our purchasing practices, which is why most of our suppliers and raw materials are local. For sustainable tourism, we make environmentally friendly purchases that produce less energy, water, and waste. In light of these principles, our facility, competing in the national and international market, demonstrates the commitment, continuous improvement, and resource allocation necessary to always be a leader.

Child Abuse and Sexual Harassment

We believe that everyone has a responsibility to protect children. We know that child welfare and the protection of children from all forms of harm are paramount, and that protecting all children we are involved with from physical and mental abuse is our fundamental duty. In light of these principles, our facility, competing in the national and international market, demonstrates the commitment, continuous improvement, and resources necessary to always be a leader.

RESOURCE CONSERVATION AND POLLUTION REDUCTION POLICY

Environmental regulations: We started our activities on four main pillars: energy conservation, water conservation, proper management of solid waste and suppliers.

- 1 - We organized awareness campaigns and training sessions among employees to save energy. Using equipment in low power mode. Replacing equipment with energy-efficient ones. Installing energy-saving light bulbs. Unplugging unused electrical systems. We make the best use of natural light. We ensure a good standard of lighting in our lighting systems. We have an internal policy that includes measures for energy conservation.
- 2 – We have organized awareness campaigns and training sessions among our employees to promote water conservation. We provide users with information on preventing dripping. We monitor monthly water consumption. We have an internal policy that includes measures to conserve water.
- 3 – Proper handling of solid waste We have a formal waste management program that ensures the separation of materials, and we deliver them to a facility to formally proceed with recycling. We train our employees by setting out concepts, practices, and policies.
- 4 - Product Consumption: We have a purchasing policy that prioritizes environmentally friendly products (biodegradable, reusable, recyclable). We use recycled paper or cardboard. We protect and support biodiversity. We have created an updated supplier list, including companies that are environmentally friendly, local, and practice fair trade.

To be respected in the world, we must respect the environment and the planet...

Our facility aims to minimize potential harm to the environment and natural resources by controlling water, electricity, energy, chemical, and solid waste quantities, without compromising the comfort of our guests.

In line with the principles of sustainable tourism, we have reduced the use of natural resources and updated our practices to minimize, and if possible eliminate, the damage to the soil, water, and air.



WATER MANAGEMENT

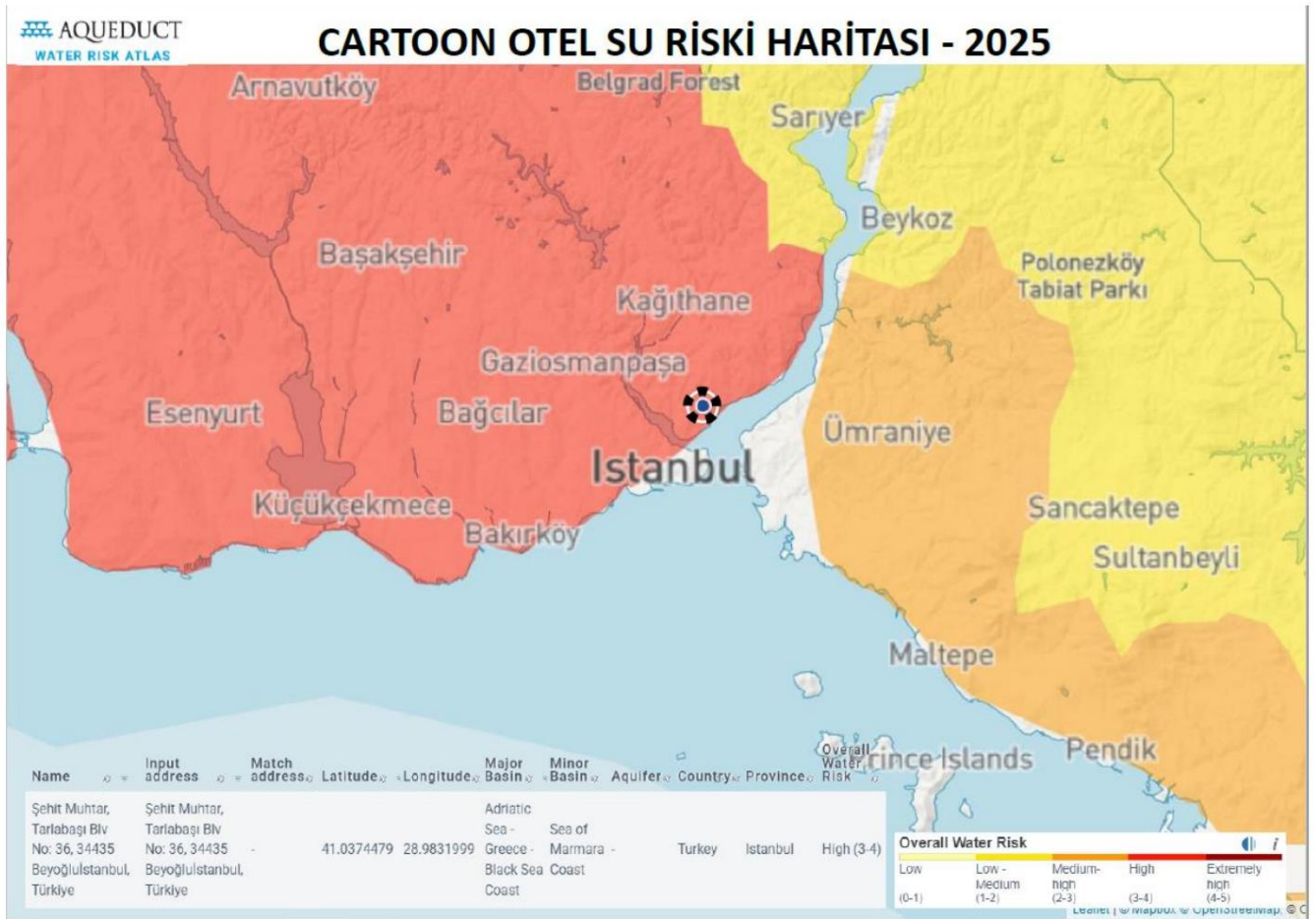
*By installing aerator devices on faucets, we have reduced our water consumption in order to conserve water.

*Our staff receives regular training every year on water conservation and rapid response to water leaks at our facility.

*We encourage guests to conserve water in rooms and common areas, and staff to do the same in staff areas.
We guide them using the information guides we place in their rooms.

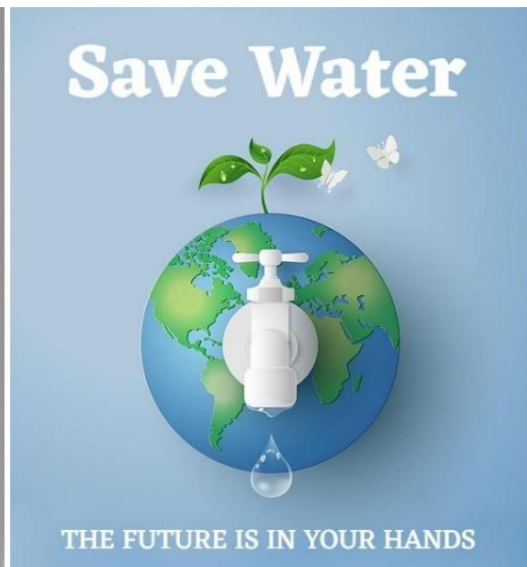
*Seals have been developed to prevent water leaks in pumps.

*Water risk is being assessed.

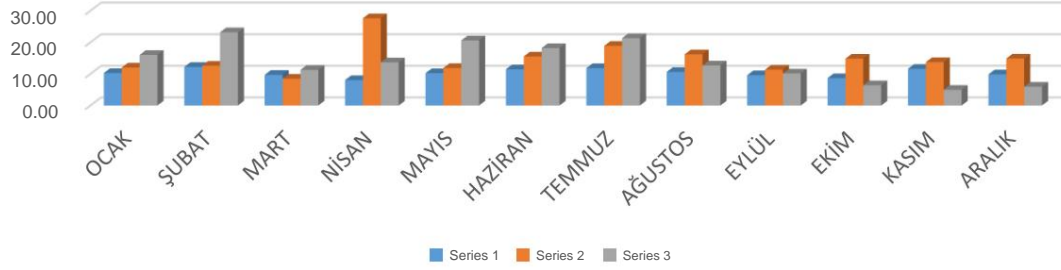


ELECTRICITY MANAGEMENT

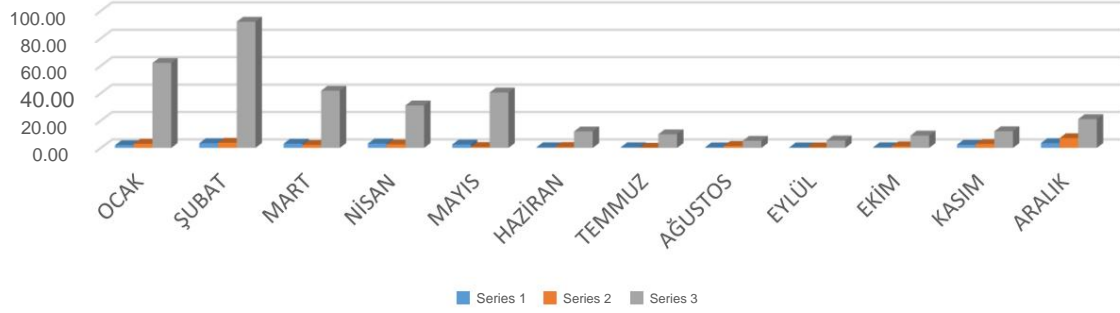
- *CARTOON HOTEL aims to switch 95% of its lighting to LED lighting.
- *Central air conditioning is available in rooms and common areas.
- *Sensor-controlled lighting is used in stairwells, emergency exits, corridors, and common areas.
- *Exterior lighting is controlled by a timer.
- *All rooms contain notices for guests regarding energy conservation.
- *A comparison table of monthly energy and water consumption for 2024 has been created.
- *Our guests will receive information and reminder messages throughout the facility to prevent energy waste outside their rooms. It is located.



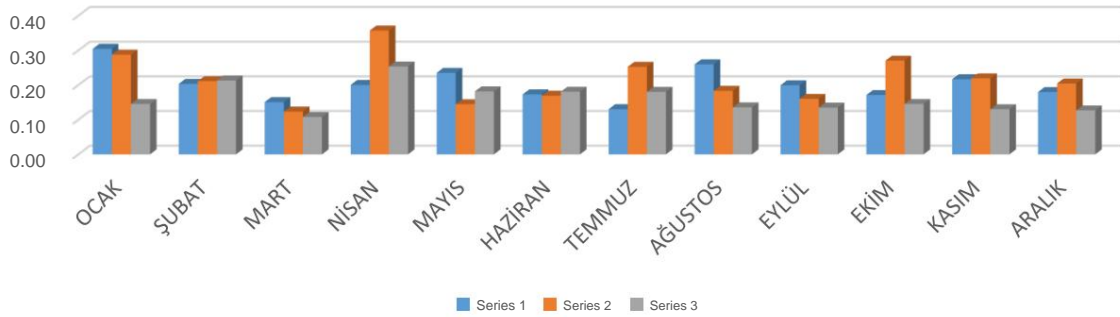
ELECTRICITY NIGHT SHIFT / kWh



NATURAL GAS OVERNIGHT / kWh



WATER OVERNIGHT / Ton



CHEMICAL MANAGEMENT



*We are continuing our efforts to minimize the use of chemicals without compromising hygiene and guest satisfaction.

*We provide training to our cleaning staff on the proper use of chemicals.

* Chemicals used both in general and in kitchen and housekeeping areas
We source from a company that uses biodegradable products.



WASTE MANAGEMENT

*Information encouraging guests to separate waste is available in the rooms and common areas.

*Our facility has a battery collection box for used batteries.

*Plenty of recycling bins are available in all common areas.

*We encourage our guests to separate their waste using numerous sorting units.

*Recyclable waste is handed over to licensed companies for recycling purposes.

*Hazardous waste must be disposed of in a hazardous waste room to ensure it does not harm the environment, and then handed over to licensed companies.



CARBON



* We take due care in selecting products that use and/or contain alternatives to ozone-depleting substances.

* When sourcing products for our facility, priority is given to local companies. This aims to minimize CO2 emissions from suppliers' delivery vehicles, thereby reducing our environmental impact.

The distribution of emissions by scope and gases is as follows:

SONUÇLAR		
Raporlanan yıl için Toplam CO2e		
709,08 tCO2e		
Toplam Misafir Odası Karbon Ayak izi	683	tCO2e
Toplam Toplantı Alanı Karbon Ayak izi	26	tCO2e
Günlük olarak kullanılan oda başına karbon ayak izi	22,2	kgCO2e
Günlük olarak kullanılan toplantı alanı m2 başına karbon ayak izi	12,4	kgCO2e

Spesifik bir müşteri için CO2 emisyonları		
Misafirin konaklama gecesi sayısı	60606	
Misafir tarafından kullanılan toplantı alanı miktarı	94	Metrekare
Misafir toplantılarının süresi	0	Saat
Misafir odasının karbon ayak izi	1.343.782	kgCO2e
Misafirlerin toplantısının karbon ayak izi	-	kgCO2e
Misafirlerin toplam karbon ayak izi	1.343.782	kgCO2e

SOCIAL RESPONSIBILITY

A visit was made to Kasýmpaýa Oya Kayacýk Children's Homes, and a cinema and dinner event was organized for 25 children. Donations were made to Lösev and TEMA. Purchases were made from the Nahýl store in support of the Women's Empowerment Foundation, and Nahýl Market brochures are also being distributed to guests. We are planning to distribute Ramadan gift packages to our employees. Cat and dog food is purchased and given to the animals in the neighborhood.

RECYCLING



* At CARTOON HOTEL, we have plastic crates, 19-liter PC water bottles, and empty chemical containers that have been returned.

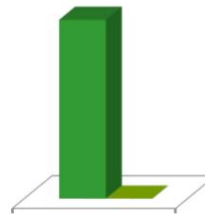
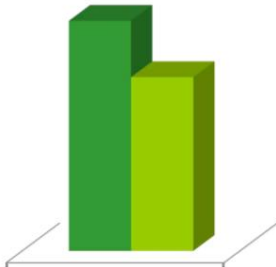
* Waste is separated in accordance with regulations.

OUR EMPLOYEES



* Full-time staff are available. Daily cleaning or lawn mowing workers are provided from the local community, and employment is guaranteed on an equal opportunity basis regardless of language, religion, race, sect, age, political views, or gender.

* Our hotel does not have any staff members residing outside of Istanbul.



EMPLOYEE DATA; The percentage of female staff in our hotels is 35% . The local employment rate is 99% .

SUPPORTING THE LOCAL POPULATION



- * We select our suppliers from the local region and prioritize local businesses when choosing subcontractors within our facility.

There are no full-time employees. Daily cleaning or lawn mowing workers are provided from the local community, with equal opportunity regardless of language, religion, race, sect, age, political views, or gender.



PROTECTION OF CHILDREN

- * Within the framework of children's rights, we respect the fundamental rights of all children and stand against all forms of torture, sexual abuse, exploitation, inhuman treatment, and degrading behavior.
- * We respect children's rights and take necessary measures to protect children from forms of exploitation (including sexual exploitation).
- * We support programs that prevent children from becoming vulnerable and in need of care.
- * We support institutions and organizations that help reintegrate children who have been involved in crime or against whom crimes have been committed, back into society.
- * We collaborate with all stakeholders who provide services to children.
- * All kinds of organizations and events aimed at child protection in our environment
We will provide support.

We value all your feedback, suggestions, and complaints, especially regarding our sustainability efforts and your accommodation experience.



Contact us

Martyr Village Head, Tarlabayy Blvd No: 36, 34435
Beyoölyü/Istanbul

info@cartoonhotel.com

+90 212 238 93 28